



Les Saintes Regatta

La Banane – Toutes Voiles Dehors

Grade 5A

From the 10th to the 13nd of february 2023

Les Saintes Guadeloupe

The notation [NP] in a rule means that a boat cannot protest (No protest) against another boat when infringing this rule. This changes RRS 60.1(a).

The notation [DP] in a rule means that the penalty for a breach of that rule may, at the discretion of the jury, be less than disqualification.

1. RULES

See the notice of race (NoR) section 1

2. CHANGES TO THE SAILING INSTRUCTIONS

- 2.1 Any change to the SIs will be posted on the Official Notice Board (ONB) no later than 2 hours before the warning signal of the race where it will take effect, except that any change to the schedule of races will be posted before 2000hrs on the day before it will take effect.
- 2.2 Changes to the SIs may be made on the water in accordance with the VHF channel 72 from the committee boat which fly the flag L

3. COMMUNICATIONS WITH COMPETITORS

See the NoR section 3

4. CODE OF CONDUCT

- 4.1 [DP] [NP] Competitors and support persons shall comply with reasonable requests from race officials.
- 4.2 [DP] [NP] Competitors and support persons shall **handle any equipment** by the organizing authority with care, seamanship, in accordance with any instructions for its use and without interfering with it

5. SIGNALS MADE ASHORE

No signals ashore

6. SCHEDULE OF RACES

See the NoR section 8

7. CLASS FLAGS

Class flags will be as follows:

Class	Flag
<i>Racings monohull CSA</i>	Green and white
<i>Racings multihull CSA-multi</i>	Green
<i>Monotypie Melges 24</i>	Yellow abd white



<i>Monotypie Class 40</i>	Red and white
<i>Local boat monohull OSIRIS</i>	Grey
<i>Local boat multihull MULTI-2000</i>	Grey and White

8. RACING AREAS

The location of the racing areas is defined in the **Appendix RACING AREAS**.

9. THE COURSES

- 9.1 The diagrams in **Appendix COURSES** describe the courses, including the approximate angles between legs, the order in which marks are to be passed or rounded, the side on which each mark is to be left and the indicative length of the courses.
- 9.2 No later than the warning signal, the race committee shall designate the course to be sailed and, if necessary, will indicate the approximate bearing and length, of the first leg of the course. The signals defining the course to be sailed will be given by a digital flame.
- 9.3 Coastal course:
No later than the warning signal, the race committee will display "D" flag if the course includes an offset mark. It will display a green flag to indicate that it is to be passed or rounded to starboard. Absence of a green flag means that the offset mark is to be passed or rounded to port (this changes Race Signals).
- 9.4 Gates and marks to be rounded where the course is shortened are described in the **Appendix COURSES**.
- 9.5 **Official ranking at a mark:** The race committee may interrupt a race for any of the reasons mentioned in RRS 32.1 and validate the race using for the finishing order the last official ranking at one of the marks to be rounded mentioned in **Appendix COURSES** (this changes RRS 32). Arrangements are detailed in **Appendix OFFICIAL RANKING AT A MARK**.

10. MARKS

10.1

Start	Course	Offset	Change	Finish
red buoy	Yellow buoy	yellow conical buoy	yellow conical buoy	red buoy

- 10.2 A race committee boat signaling a change of a leg of the course is a mark.

11. AREAS THAT ARE OBSTRUCTIONS

The areas considered as obstructions are specified in the **Appendix RACING AREAS**.

12. THE START

- 12.1 The starting line will be between a staff displaying an orange flag on the race committee boat and the starting mark.
- 12.2 *[DP] [NP]* Waiting boats: Boats whose warning signal has not been given must avoid the starting area while other boats are in starting procedure.
- 12.3 If any part of a boat's hull is on the course side of the starting line at her starting signal and she is identified, the race committee may give her sail number on VHF channel 72. The absence of VHF transmission or reception will not be grounds for redress (this changes RRS 62.1(a)).
- 12.4 A boat that does not start within **4 minutes** after her starting signal will be scored Did Not Start without a hearing. This changes RRS A5.1 and A5.2.

13. CHANGE OF THE NEXT LEG OF THE COURSE

Not applicable

14. THE FINISH



- 14.1 The finishing line is between **a staff displaying a blue flag on the race committee boat** and **the finishing mark**.
- 14.2 [DP] If the race committee is absent when a boat finishes, she shall report her finishing time, and her position in relation to nearby boats, to the race committee at the first reasonable opportunity.
- 15. PENALTY SYSTEM**
- 15.1 For the **[class(es)]**, RRS 44.1 is changed so that the Two-Turns Penalty is replaced by a One-Turn Penalty.
- 15.2 When rules of chapter 2 of RRS no longer apply and are replaced by part B section II of IPCAS, RRS 44.1 does not apply.
- 16. TIME LIMITS AND TARGET TIMES**
- 16.1 The times are as follows: not applicable
- 16.2 Boats not finishing **30 minutes** after the first boat to complete the course and finish will be scored as DNF (This changes RRS 35, A4 and A5).
- 16.3 Failure to meet the Target Time will not be grounds for redress. This changes RRS 62.1(a).
- 17. HEARING REQUESTS**
- 17.1 For each class, the protest time limit is **60 minutes** after the last boat in that class has finished the last race of the day or the race committee signals no more racing today, whichever is later. The time will be posted on the ONB.
- 17.2 Hearing request forms are available from the jury office at **[location]**.
- 17.3 Notices will be posted no later than 30 minutes after the protest time limit to inform competitors of hearings in which they are parties or named as witnesses. Hearings will be held in the jury room, located at **[location]**, beginning at the time posted on the ONB.
- 18. SCORING**
- 18.1 One race is required to be completed to complete a series.
- 18.2 No applicable
- 18.3 The calculation of the compensated time of the boats which are subject to it will be done according to the system **time on time**.
- 18.4 The factors to be used for the calculation of the compensated times, as they appear from the competitor's declarations at the time of their registration or from the FFVoile rating tables, will be posted on the ONB at **[time]**, and at the latest one hour before the scheduled starting time of the first race. Protests concerning these factors will be lodged before the protest time limit on the first day of racing.
- 19. SAFETY RULES [DP][NP]**
- 19.1 A sign-out and sign-in system may be organized. **[description of procedure]**.
- 19.2 A boat that retires from a race shall notify the race committee at the first reasonable opportunity
- 19.3 VHF channel when racing is **[channel]**.
- 19.4 **Bowsprit use:**
Unless otherwise specified in the class rules, the bowsprit may be extended only to set and carry the spinnaker.



20. REPLACEMENT OF CREW OR EQUIPMENT

- 20.1 [DP] Substitution of competitors is not allowed without prior written approval of the race committee or the jury.
- 20.2 [DP] Substitution of damaged or lost equipment is not allowed unless authorized in writing by the technical committee or the race committee. Requests for substitution shall be made to the committee at the first reasonable opportunity.

21. EQUIPMENT AND MEASUREMENT CHECKS

- 21.1 A boat or equipment may be inspected at any time for compliance with the class rules, notice of race and sailing instructions.
- 21.2 [DP] On the water, a member of the technical committee may ask a boat to sail immediately to a given area for inspection.
- 21.3 [DP] A boat shall be in compliance with the *rules* [75 minutes] before its warning signal.

22. OFFICIAL VESSELS

Official vessels will be identified as follows [*identification description*].

23. SUPPORT PERSONS

- 23.1 [DP] [NP] Support persons shall stay outside the areas where boats are racing from the time of the preparatory signal for the first start until all boats have finished or retired or the race committee signals a postponement, general recall or abandonment.
- 23.2 [DP] [NP] Support vessels shall be identified with yellow flag la Banane
- 23.3 The regulations governing the conditions of intervention of support persons on FFVoile events shall apply.

24. TRASH DISPOSAL

Rubbish must be kept on board until the end of the last race of the day, then landed at the appropriate place.

25. BERTHING

No applicable

26. HAUL-OUT RESTRICTIONS

No applicable

27. DIVING EQUIPMENT AND PLASTIC POOLS

No applicable

28. PRIZES

Prizes will eventually be awarded in each class for the first three.

Race officials appointed:

Race committee chair : **Jacques LAMINIE**
 Jury chair : **Alexis DUVERNOY**



APPENDIX RACING AREAS

Marine chart showing the racing zone(s) **and the zone(s) which is (are) obstruction(**APPENDIX OFFICIAL RANKING AT A MARK

The race committee may interrupt a race for any of the reasons mentioned in RRS 32.1 and validate the race using for the finishing order the last official ranking at one of the marks to be rounded mentioned in Appendix Courses (this changes RRS 32).

If a race committee boat displaying the 2nd substitute and class flags concerned (this changes Race signals) is close to one of the marks specified below, the mark and the race committee boat are a gate where an official ranking of the boats will be made. Boats shall sail through the gate and continue racing.

If the race committee decides thereafter to interrupt the race, he will display flags S over H with two sound signals (this changes Race signals) meaning: "the race is interrupted, and the last official ranking will be used for the finishing order." If possible, the race committee will confirm these arrangements by VHF.

In an interruption is signaled according to this Appendix, the gate where the last official ranking was taken becomes the finish line for the classes concerned.

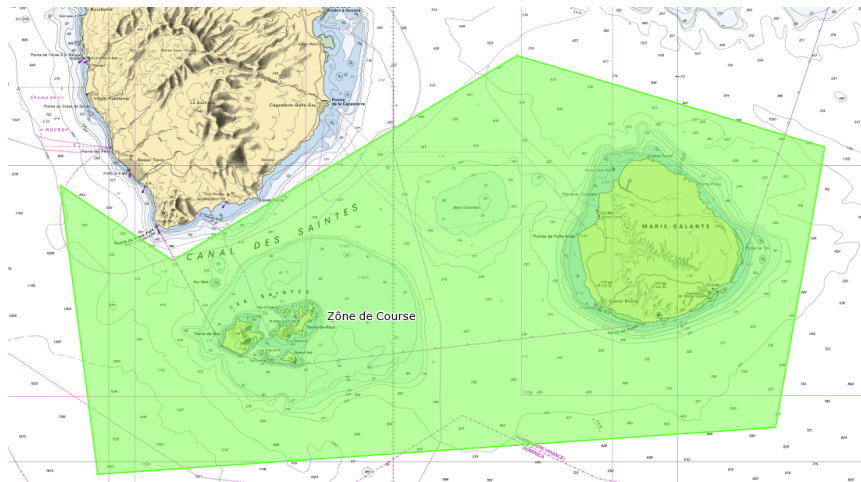
If an incident possibly resulting in a protest occurs between the time the boats cleared this finish line and the time the interruption was reported, no boat shall be penalized for a breach of a rule in Chapter 2, except if it breaks RRS 14 when the incident caused injury or serious damage, or RRS 23.1.

An official ranking may be taken at the following marks: see the race appendix



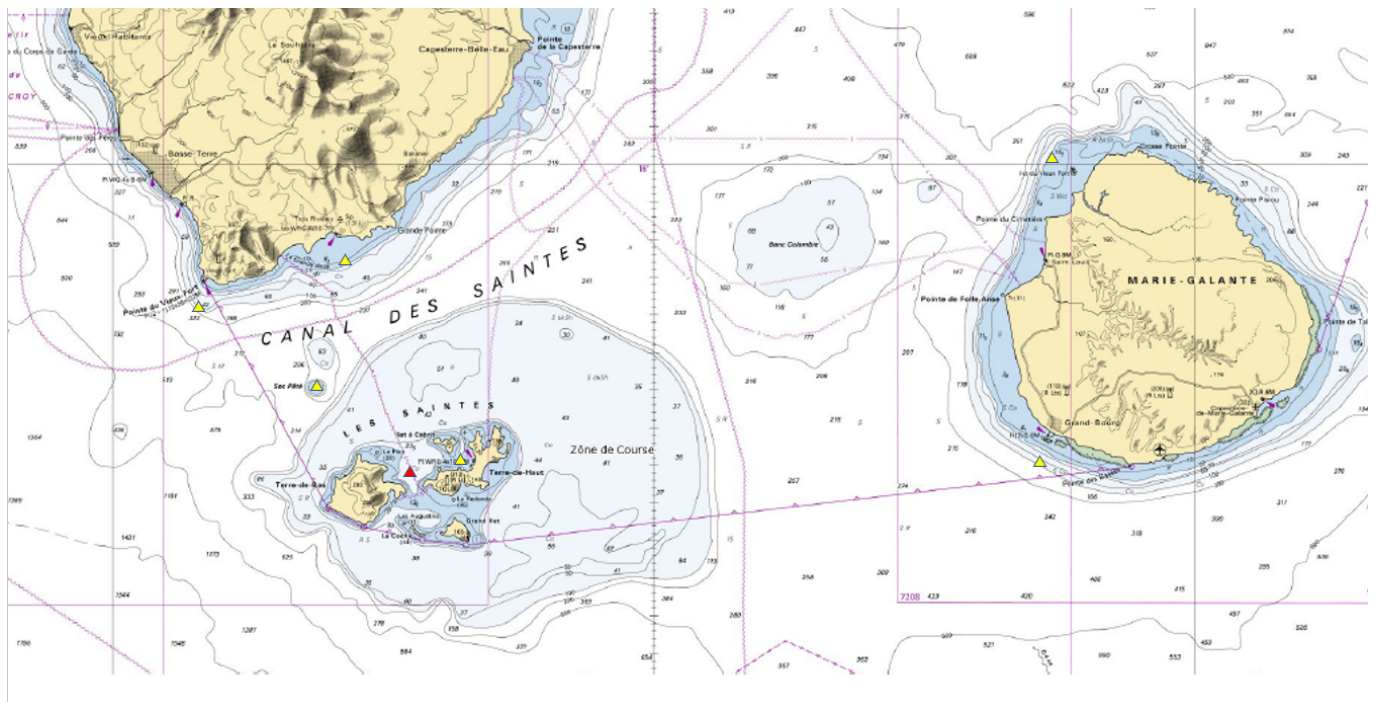
**ANNEX VENUE OF THE
EVENT Les Saintes Guadeloupe**

APPENDIX RACE AREA



COURSE APPENDIX

The routes are given here as an indication, Their final version will be given with the IC



Les Saintes – Marie Galante

Parcours 1 : (65 nq)

Starting line – Clearance buoy upwind of the starting line to be left on the port side – The whale (green buoy) - turn of Marie Galante leaving all islet to starboard – return to Les Saintes via the south-west pass – Line of arrival.

Parcours 2 : (43 nq)

Starting line – Clearance buoy upwind of the starting line to be left on the port side – The whale (green buoy) – Vieux Fort islet buoy to be left on the starboard side - return to Les Saintes via the south-west pass – Main line 'arrival.

Parcours 3 : (38 nq)

Starting line – Clearance buoy upwind of the starting line to be left on the port side – The whale (green buoy) – Grand-Bourg buoy to be left on the starboard side - return to Les Saintes via the south-west pass – Main line 'arrival.

Parcours 4 : (21 nq)

Starting line – Clearance buoy upwind of the starting line to be left to port – Leave Ilet à Cabrit to starboard the Pâté to port – Sec Pâté buoy to starboard – Vieux Fort lighthouse buoy to starboard – Trois Rivière buoy to starboard – Return to Les Saintes via the whale pass – Finish line.

Parcours 5 : (18 nq)

Starting line – Clearance buoy upwind of the starting line to leave to port – Leave Ilet à Cabrit to starboard le Pâté to port – Sec Pâté buoy to starboard – Vieux Fort lighthouse buoy to starboard – Return to Les Saintes via the whale pass – Finish line.

Parcours 6 : (11 nq)

Starting line – Clearance buoy upwind of the starting line to leave on the port side – Leave ilet à Cabrit on the starboard side of the Pâté on the port side – Sec Pâté buoy on the starboard side – Return to Les Saintes via the whale pass – Finish line .

Tours Des Saintes



Parcours 7 : Tour des Saintes : (18 nq)

Starting line - Clearance buoy upwind of the starting line to be left to port - Exit via the green La Baleine buoy - Around the Saintes leaving all the islands or islets of the Saintes archipelago to starboard - Entry via the La Baleine green buoy - Finish line

Parcours 8 : Tour des Saintes N°2 : (17 nq)

Starting line - Clearance buoy upwind of the starting line to be left to port - Exit via the green La Baleine buoy - Around the Saintes leaving all the islands or islets of the Saintes archipelago to starboard - Entering the Baie des Saintes leaving Le Pâté to starboard and Ilet à Cabrit to port - Finish line

Parcours 9 : Tour des Saintes N°3 (12 nq)

Starting line - Clearance buoy upwind of the starting line to be left to port - Exit via the green La Baleine buoy - Around the Saintes leaving all the islands or islets of the Saintes archipelago to starboard - Entering the Baie des Saintes via the South-West pass - Finish line

Parcours 10 Le Trèfle à quatre feuilles (31 nq)

Starting line - Clearance buoy upwind of the starting line to be left on the port side - Exit via the green La Baleine buoy - Tours de Terre de Haut leaving all the islets of Terre de Haut on the starboard side - Entry via the Passe du Grand îlet – South pass – Finish line – Clearing buoy – Passe de la Baleine – Leave îlet Cabrit to starboard - exit through the southern pass then pass the grand îlet – leave the grand îlet to starboard – enter through the pass du Sud-Ouest – Passe du Sud – leave land from bottom to port as well as all the islets – entry via the Passe du Sud-Ouest – Passe du Sud – Finish line

Parcours 11 BANANE N°1 : (10 nq)

In the bay of Les Saintes

Starting line to Sugar Loaf - Windward buoy to Terre de Haut left to port - Dry leeward buoy Pâté to leave to port - Finish line to the Pain de Sucre - Number of laps indicated on the committee boat by a digital pennant

Parcours 12 BANANE N°2 : (6 nq)

In the bay of Les Saintes

Starting line to Sugar Loaf

Windward buoy to Terre de Haut left to port

Leeward buoy to Terre de Bas left to port

Finish line to the Pain de Sucre

Number of laps indicated on the committee boat by a digital pennant

