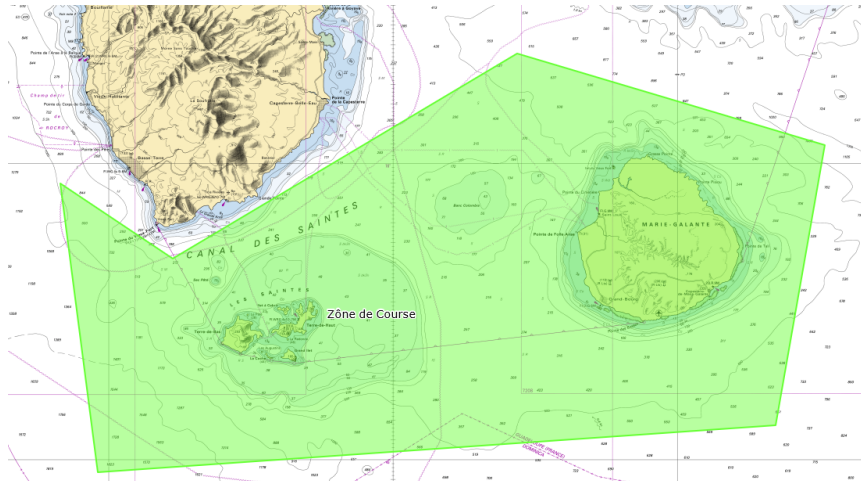


ANNEX VENUE OF THE EVENT

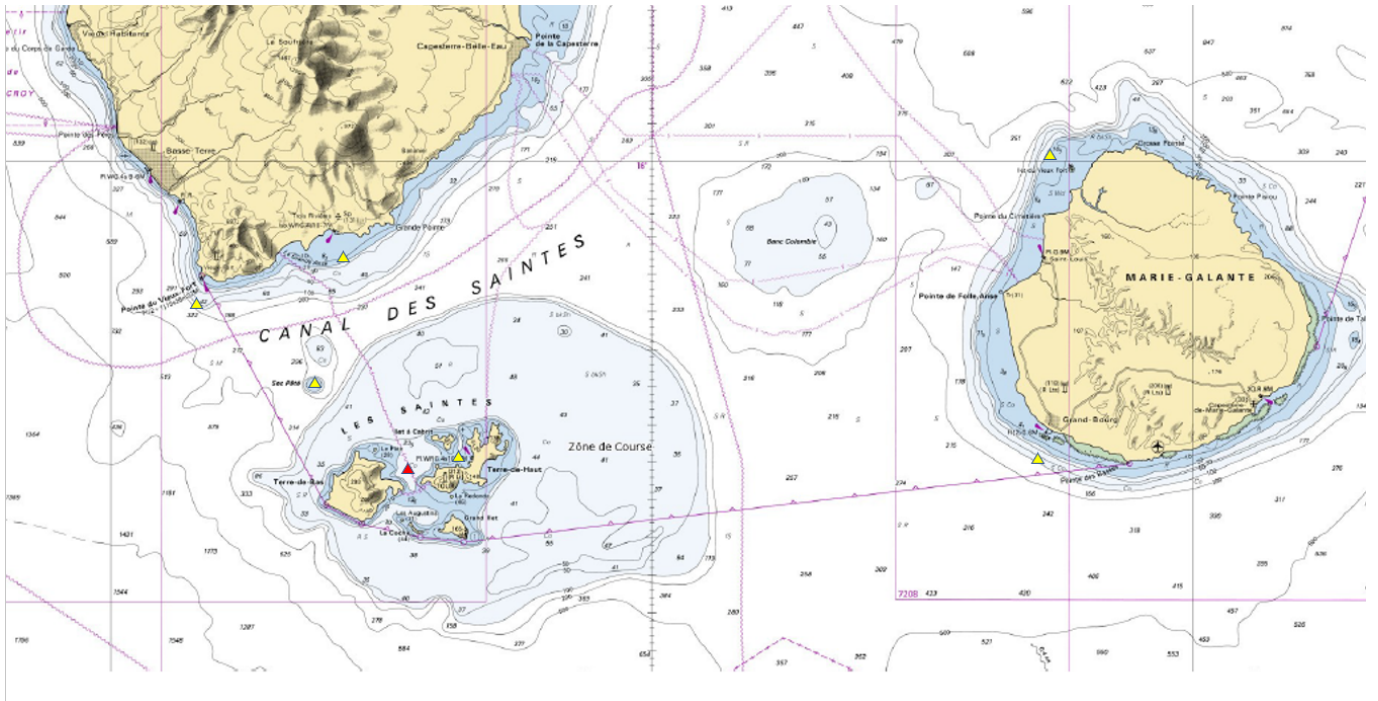
Les Saintes Guadeloupe

APPENDIX RACE AREA



COURSE APPENDIX

The race courses are given here as an indication,
Their final version will be given with the IC



Les Saintes – Marie Galante

Race course 1 : (65 nq)

Starting line – Clearance buoy upwind of the starting line to be left on the port side – The whale (green buoy) - turn of Marie Galante leaving all islet to starboard – return to Les Saintes via the south-west pass – Line of arrival.

Race course 2 : (43 nq)

Starting line – Clearance buoy upwind of the starting line to be left on the port side – The whale (green buoy) – Vieux Fort islet buoy to be left on the starboard side - return to Les Saintes via the south-west pass – Main line arrival.

Race course 3 : (38 nq)

Starting line – Clearance buoy upwind of the starting line to be left on the port side – The whale (green buoy) – Grand-Bourg buoy to be left on the starboard side - return to Les Saintes via the south-west pass – Main line arrival.

Race course 4 : (21 nq)

Starting line – Clearance buoy upwind of the starting line to be left to port – Leave Ilet à Cabrit to starboard the Pâté to port – Sec Pâté buoy to starboard – Vieux Fort lighthouse buoy to starboard – Trois Rivière buoy to starboard – Return to Les Saintes via the whale pass – Finish line.

Race course 5 : (18 nq)

Starting line – Clearance buoy upwind of the starting line to leave to port – Leave Ilet à Cabrit to starboard le Pâté to port – Sec Pâté buoy to starboard – Vieux Fort lighthouse buoy to starboard – Return to Les Saintes via the whale pass – Finish line.

Race course 6 : (11 nq)

Starting line – Clearance buoy upwind of the starting line to leave on the port side – Leave Ilet à Cabrit on the starboard side of the Pâté on the port side – Sec Pâté buoy on the starboard side – Return to Les Saintes via the whale pass – Finish line .

Tours Des Saintes



Race course 7 : Tour des Saintes : (18 nq)

Starting line - Clearance buoy upwind of the starting line to be left to port - Exit via the green La Baleine buoy - Around the Saintes leaving all the islands or islets of the Saintes archipelago to starboard - Entry via the La Baleine green buoy - Finish line

Race course 8 : Tour des Saintes N°2 : (17 nq)

Starting line - Clearance buoy upwind of the starting line to be left to port - Exit via the green La Baleine buoy - Around the Saintes leaving all the islands or islets of the Saintes archipelago to starboard - Entering the Baie des Saintes leaving Le Pâté to starboard and Ilet à Cabrit to port - Finish line

Race course 9 : Tour des Saintes N°3 (12 nq)

Starting line - Clearance buoy upwind of the starting line to be left to port - Exit via the green La Baleine buoy - Around the Saintes leaving all the islands or islets of the Saintes archipelago to starboard - Entering the Baie des Saintes via the South-West pass - Finish line

Race course 10 Le Trèfle à quatre feuilles (31 nq)

Starting line - Clearance buoy upwind of the starting line to be left on the port side - Exit via the green La Baleine buoy - Tours de Terre de Haut leaving all the islets of Terre de Haut on the starboard side - Entry via the Passe du Grand îlet – South pass – Finish line – Clearing buoy – Passe de la Baleine – Leave îlet Cabrit to starboard - exit through the southern pass then pass the grand îlet – leave the grand îlet to starboard – enter through the pass du Sud-Ouest – Passe du Sud – leave land from bottom to port as well as all the islets – entry via the Passe du Sud-Ouest – Passe du Sud – Finish line

Race course 11 BANANE N°1 : (10 nq)

In the bay of Les Saintes

Starting line to Sugar Loaf - Windward buoy to Terre de Haut left to port - Dry leeward buoy Pâté to leave to port - Finish line to the Pain de Sucre - Number of laps indicated on the committee boat by a digital pennant

Race course 12 BANANE N°2 : (6 nq)

In the bay of Les Saintes

Starting line to Sugar Loaf

Windward buoy to Terre de Haut left to port

Leeward buoy to Terre de Bas left to port

Finish line to the Pain de Sucre

Number of laps indicated on the committee boat by a digital pennant

